



FTB-7200D

Repair instructions

- [Opening procedure](#)
- [Changing the output bulkhead connector](#)
- [Replacement of the OTDR assembly](#)
- [Calibration \(for CSC only\)](#)
- [Closing procedure](#)
- [Cleaning the output bulkhead connector](#)

Upgrade instructions

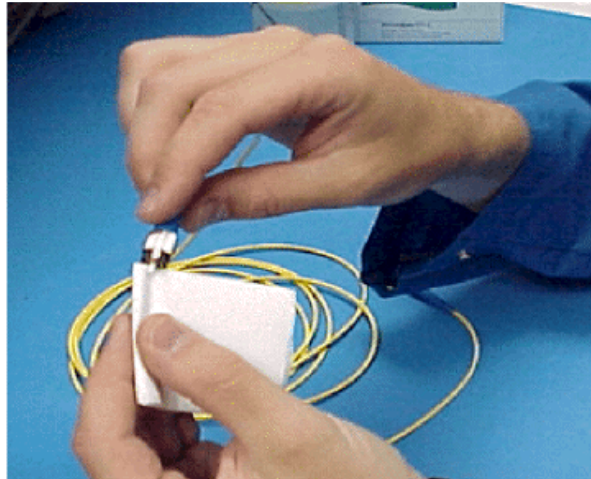
- [Monitoring circuit patch for version A and B](#)
- [Monitoring circuit patch for version C to E](#)
- [Monitoring circuit patch for version F to J](#)

ICSC-00094A - Cleaning the output bulkhead connector

1. Cleaning the output bulkhead connector

1.1 Dampen a Kimwipe **1001797** with isopropanol.

1.2 Clean the patchcord with the cleaning kit you've set before, as shown below:

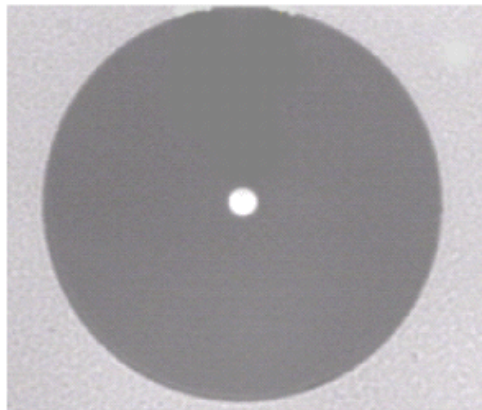


(DDES-14583)

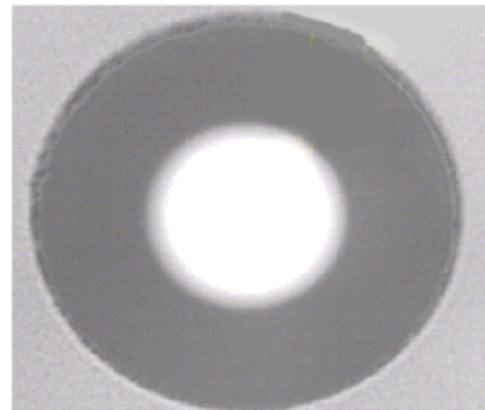
1.3 With another Kimwipe, wipe the patchcord, following the same procedure as the one given in the picture above.

1.4 Look at the patchcord with a FOMS microscope. If the fiber is clean, you will see the patchcord as shown in the picture below, depending on the type of fiber you've cleaned. In this case, the cleaning is complete.

MONOMODE

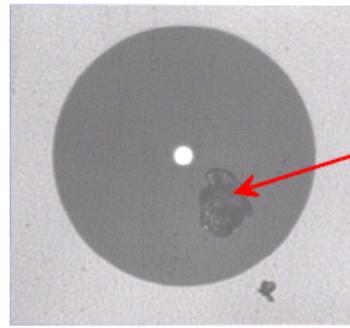


MULTIMODE

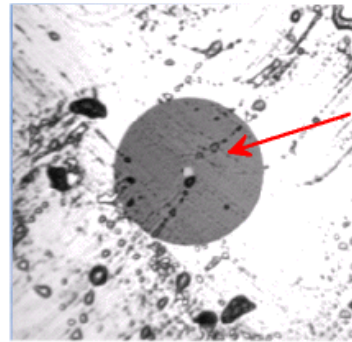


(DDES-14584)

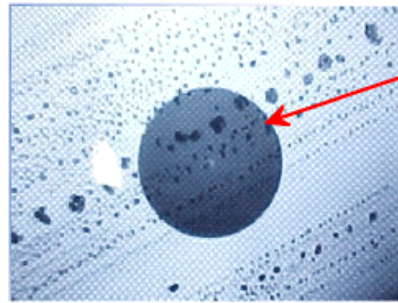
1.5 If the patchcord is still dirty, as shown below, follow the steps 1.6 and 1.7.



Dust is remaining on the fiber.



The patchcord is greasy.

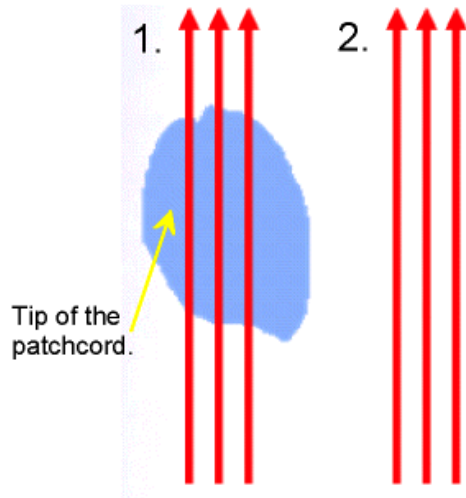


Isopropanol is remaining on the fiber.

(DDES-14585)

1.6 Put a drop of isopropanol on one corner of a kimwipe.

1.7 With this cleaning kit, rub the tip of the patchcord with the wet corner of the kimwipe. Rub on three different locations on the tip, always in the same way. Then, wipe the tip of the patchcord, following the same procedure as the one you have employed to rub the tip with the wet surface. See the picture below.



(DDES-14586)